



The Z10 RGB keyboard was built with enthusiasts in mind. Now available with a full RGB backlit key layout with "per-key" customization. Along with the great features of the Z10 RGB, such as a magnetically-attached customizable wristpad, extensive macro controls, quick-switch profile buttons, volume and LED sliders, and spring-loaded feet to quickly move into strike position - the EVGA Z10 RGB puts performance and convenience no further than the tips of your fingers. Last, but not least, the Z10 RGB keyboard features your choice of in blue or brown mechanical Kailh® switches with N-Key rollover to ensure that you get exactly the type of feedback you want. With its sleek design, responsive typing, and highly-detailed user control panel, the EVGA Z10 RGB is the final piece missing from your system to ensure great looks and gaming dominance.

### 1. USB Ports

Conveniently connect devices to your keyboard - on either side.



### 2. E-Key

Quickly enable/disable features with the touch of a button.



### 3. EVGA Macro Keys

Create macros. Use macros. Lots of macros.



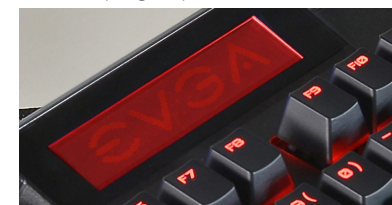
### 4. Volume / Brightness Sliders

Quickly adjust your Z10 experience on the fly.



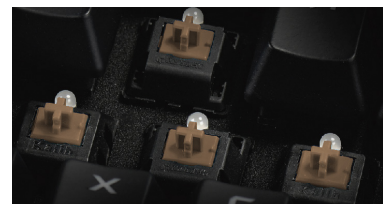
### 5. LCD Display

Designed for utility. Monitor hardware, track game timers, or anything else you need.

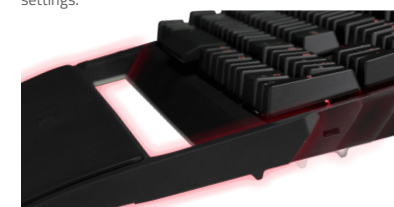


### 6. Sturdy, reliable Kailh® Switches

Choose accuracy with the clicky Blue switches, or go silent with tactile Brown switches.

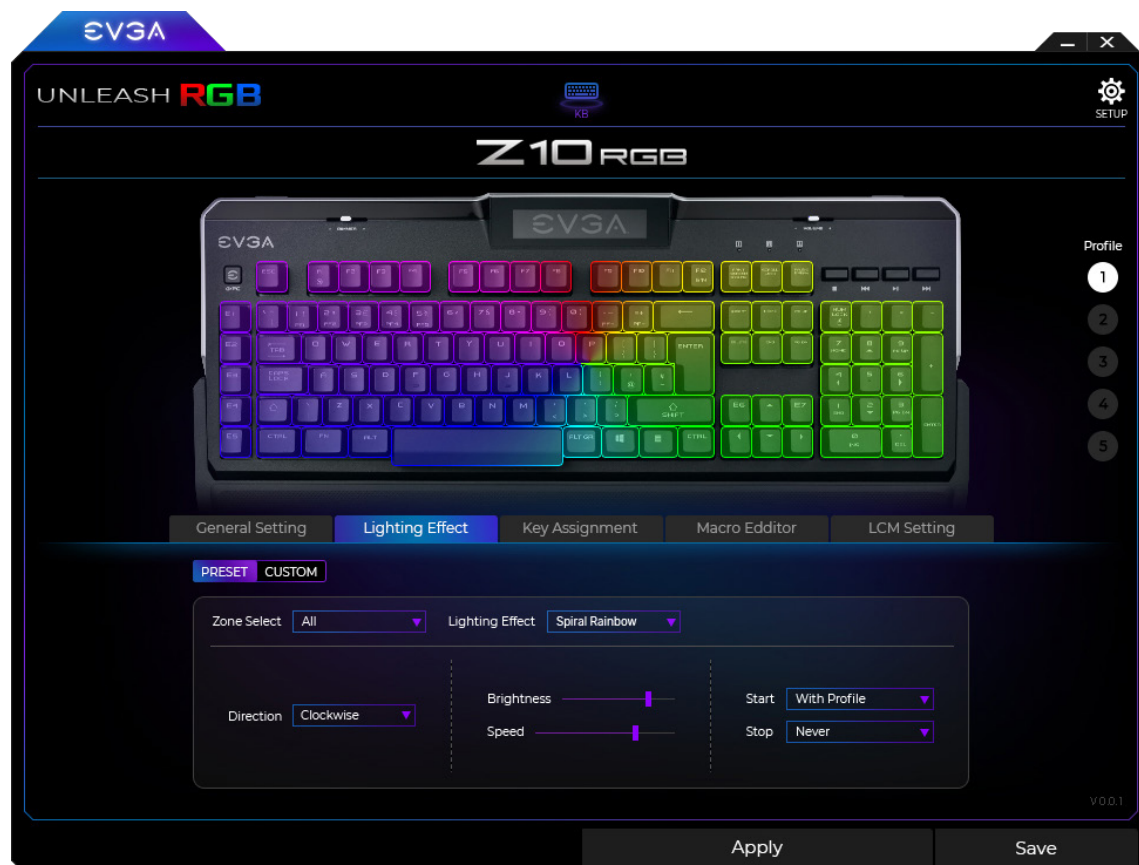


### 7. Magnetically Attached, Customizable Wristpad



### PRODUCT WARRANTY

This product is covered under EVGA's 3 year limited warranty which covers parts and labor. For more details please visit: [www.evga.com/warranty](http://www.evga.com/warranty).



## KEY SPECS

- Kailh Mechanical Brown Switches
- 60 million keystroke lifespan
- 1000Hz Ultra Polling Rate
- Anti-Ghosting with N-KEY rollover function
- "E-Key" button disables Windows Keys for Gaming Mode
- Braided USB Cable with cable tie
- Multimedia Shortcut Key
- Audio / Brightness slider
- Information Display LCD
- Customizable RGB LED backlighting
- 2x USB 2.0 ports
- 3-Year EVGA Global Warranty

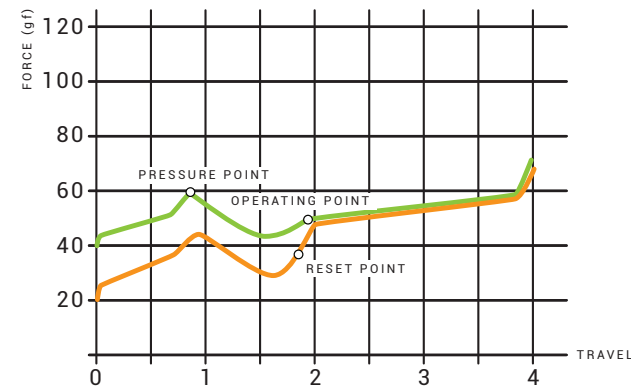
## DIMENSIONS

- Width: 7.28 in / 185mm
- Length: 18.5 in / 470mm
- Height: 1.38 in / 35mm
- Weight: 3.25 lbs. / 1.48kg

## ACCESSORIES

- Quick Guide
- Key Puller
- Spare Keysets

	KAILH BROWN
EVGA KEYBOARD MODELS	#803-ZT-N201-KR
TYPE	Tactile And Silent
OPERATING FORCE	45G
TACTILE FORCE	55G
BREAKING TRAVEL	1.85 mm
PEAK TRAVEL FORCE	0.9 mm
FULL TRAVEL	4.0 mm
PRE-TRAVEL	2.0 mm



## PRODUCT WARRANTY

This product is covered under EVGA's 3 year limited warranty which covers parts and labor. For more details please visit: [www.evga.com/warranty](http://www.evga.com/warranty).