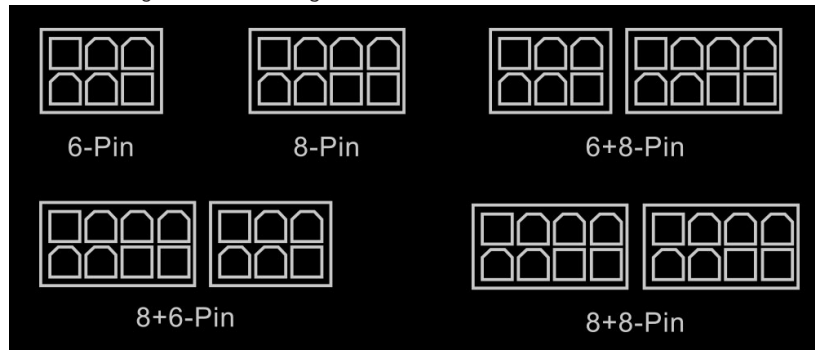




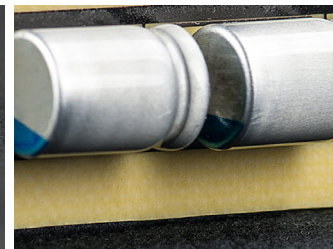
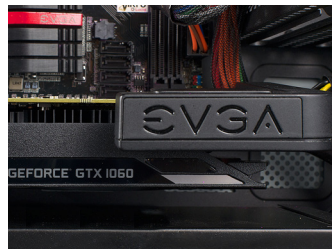
The EVGA PowerLink has one primary function: to make your PC look even more awesome. This adapter allows you to reroute the power inputs for your graphics card, giving you improved case airflow, a lower profile height, and best of all, cleaner wiring setup. It even supports a unique configuration system allowing you to mix and match power input types to match your EVGA graphics card. The EVGA PowerLink is the best way to revolutionize your cable management.



- Dramatically improved cable management
- Supports a variety of different PCI-E connections
- Adjustable connector spacing
- Integrated Solid state capacitors for in-line power filtering
- Easy Installation

EVGA PowerLink Supports:

- **ALL** EVGA GeForce RTX 2080Ti/2080
 - **ALL** NVIDIA GeForce RTX 2080 Ti/2080 Founders Editions
 - **ALL** EVGA GeForce GTX 1080Ti*/1080/1070
 - **ALL** NVIDIA Founders Edition GeForce GTX 1080 Ti/1080/1070 Ti/1070
 - **MOST** EVGA GeForce GTX 1060
 - **MOST** EVGA GeForce GTX 980 Ti / 980 / 960 / and 950
- * Excludes EVGA GTX 1080 Ti KINGPIN and EVGA GTX 1080 Ti KINGPIN HYDRO COPPER*



MODS RIGS
 \$1k Sponsorships for every 200 posts.
 Come show off your rig and join in on one of the biggest things happening at EVGA.
www.evga.com/community/modsrigs

EVGA SoNet
 Follow EVGA on your favorite Social Networking sites like Facebook, Twitter, Steam, and the EVGA Gaming Community.
www.evga.com/sonet

EVGA GAMING
 If you live to game, this is the place for you! We have the best tournaments, prizes and game servers.
www.evga.com/gaming

Technical Support
 EVGA is here for you day or night to help answer any questions!
www.evga.com/support



PRODUCT WARRANTY

This product is covered under EVGA's 2 year limited warranty which covers parts and labor. For more details please visit www.evga.com/warranty.