

# EVGA Z170 Classified 4-Way

PART NUMBER: **151-SS-E179** **INTRO**



The EVGA Z170 Classified is engineered from the ground up to be the best overclocking motherboard on the planet. Featuring a next generation Intel Z170 Express Chipset with DDR4 3200MHz+ memory support, this motherboard is built to perform. Two SATA Express ports, up to eight SATA 6G ports, two USB 3.1 and two M.2 ports provide robust storage and I/O options, and with support for NVIDIA 4-Way SLI® Technology, you can pair up to four NVIDIA graphics cards for insane gaming performance.

## KEY SPECS

- Supports Intel® Core™ 6th Generation Processor Family for LGA Socket 1151
- 300% Increased Gold Content
- Intel® Z170 Chipset
- Enthusiast Layout Supporting 4-Way SLI®, 3-Way SLI®, and 2-Way SLI®
- 4 DIMM Dual-Channel DDR4 3200MHz+ (64GB)
- PCI Express® 3.0 Ready
- 2 USB 2.0 ports (two rear panel)
- 8 USB 3.0 Ports (six rear panel, two onboard)
- 2 USB 3.1 Ports (two onboard)
- 1 HDMI Port
- 1 DisplayPort 1.2 Port
- 8 SATA 6G Ports (2 SATA Express)
- 2 M.2 (Key M/E) Up to 32Gbps (M)
- 2 Intel Gigabit Ethernet Port (10/100/1000)
- Creative Sound Core3D Quad-Core Audio Processor + Optical
- E-ATX Form Factor

## DESIGN DETAILS

**Supported CPUs** - Intel® 6th Generation Socket 1151 Processors  
**Socket Type** - LGA 1151  
**PCH** - Intel® Z170

**DIMM QTY** - 4 DIMM Slots  
**Memory Type** - DDR4 Up to 3200MHz+  
**Memory Capacity** - 64GB

**SATA 6Gb/s Ports/Controller** - 6 / Intel® Z170 PCH - 2 / Marvell 9220  
**SATA Express** - 2 / Intel® Z170 PCH (Shared with SATA)  
**RAID Support** - RAID 0, 1, 5 and 10

**USB 2.0 Ports/Controller** - 2 / Intel® Z170 PCH  
**USB 3.0 Ports/Controller** - 8 / Intel® Z170 PCH  
**USB 3.1 Ports/Controller** - 2 / ASMedia ASM1142

**Network Speed** - 10/100/1000  
**Network Ports/Controller** - 2 / Intel® i219/i210 Gigabit Ethernet PHY

**Audio** - 6 Channel HD  
**Audio Controller** - Creative Sound Core3D Quad-Core Audio Processor + Optical

**PCI-E Slot Arrangement** - 1x16, 2x16, 3x8, 4x8  
**PCI-E x16 Mechanical Slots** - 5  
**PCI-E x4 Mechanical Slots** - 1  
**M.2 / 1x Key M (Up to 32Gbps)**  
**M.2 / 1x Key E**

**BIOS Type** - Full UEFI with mouse/keyboard control  
**Software** - EVGA E-LEET X Tuning Utility

**Fan Headers** - 7 / 4-Pin PWM

## DIMENSIONS

- Width: 10.375in - 263.5mm
- Length: 12in - 304.8mm
- Form Factor: E-ATX

## ACCESSORIES

- EVGA Driver Installation Disc
- Rear Case I/O Panel
- Rear Case I/O Cover
- 1 Probe-It Cable
- 2 SATA 6G Data Cables
- 2-way SLI Bridge
- 2 Port USB 3.0 Bracket
- Manual



## PRODUCT WARRANTY

This product is covered under EVGA's 3 year warranty which covers parts and labor. Further warranty extension is available upon registration within 30 days of purchase. For more details please visit [www.evga.com/warranty](http://www.evga.com/warranty)





# EVGA Z170 Classified 4-Way

PART NUMBER: **151-SS-E179** **FEATURES**

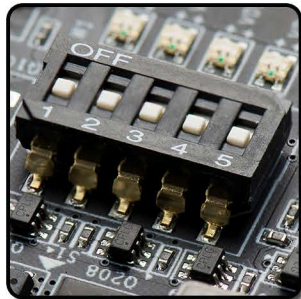
## FULL UEFI GUI BIOS INTERFACE

Focused on functionality



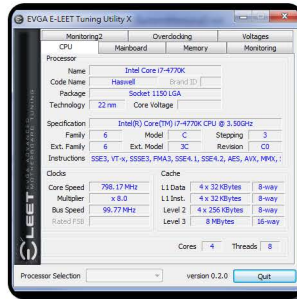
## PCI-E DISABLE SWITCH

Quickly and easily troubleshoot!



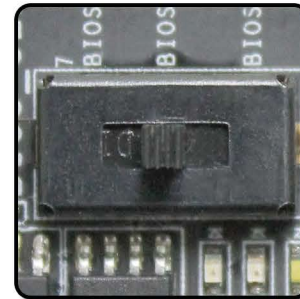
## E-LEET X TUNING UTILITY

Adjust your overclocking in 0.5.



## TRIPLE BIOS SUPPORT

Use 3 separate profiles!



## RIGHT ANGLED 24 PIN

Improved cable management



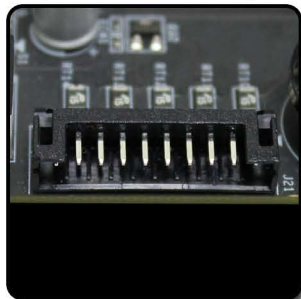
## HIGHER GOLD CONTENT

Lower inductance, better power delivery!



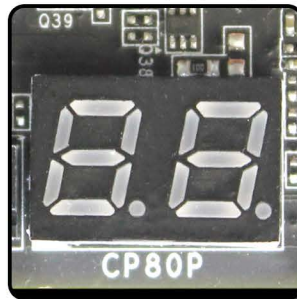
## EZ VOLTAGE READ POINTS

Easy read dedicated read points



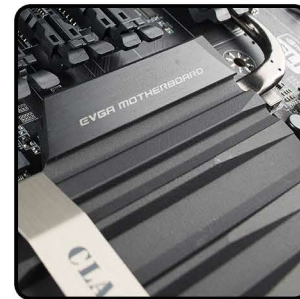
## ONBOARD CPU TEMP MONITOR

Monitor CPU temps quickly & easily



## PASSIVE CHIPSET HEATSINK

No fans, lower noise, longer lifespan



## DUAL 8 PIN CPU POWER

Optional 8 pin provides up to 600w



## 8 PHASE PWM

Cleanest variable power switching



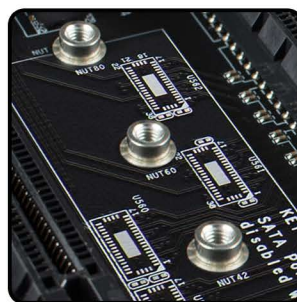
## 8 LAYER PCB

Improved overclock stability and PCB cooling



## M.2 SLOT

Next generation form factor



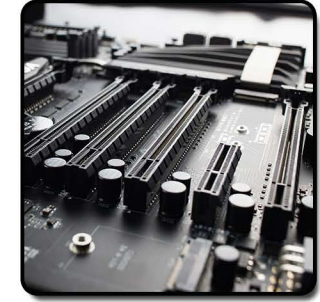
## ONBOARD POWER

Reset and CMOS Reset Buttons – Power at your fingertips



## 4-WAY SLI

Engineered to handle the most demanding video loads



## PRODUCT WARRANTY

This product is covered under EVGA's 3 year warranty which covers parts and labor. Further warranty extension is available upon registration within 30 days of purchase. For more details please visit [www.evga.com/warranty](http://www.evga.com/warranty)

