



The EVGA X79 Classified is engineered for those who demand more than just the best. This motherboard packs in the latest technologies to give you an uncompromised experience!

Uncompromised Performance – Unparalleled memory bandwidth with true quad channel DDR3 memory support, and Intel® Turbo Boost Technology 2.0 gives you intelligent computing by optimizing performance on the fly! Up to 4-way SLI® gives you the expansion you need to maximize your graphics performance.

Uncompromised Power – High performance 12 phase PWM, 100% POSCAP capacitors and ESR/ESL Film capacitors deliver clean, optimal power to your system for maximum overclocking. Dual 8pin CPU connectors can provide up to 600w of steady power to the CPU through a high quality CPU socket with three times the normal amount of gold content for the lowest impedance, and highest current transfer. Also, with built in EVGA EVBot** support, you can overclock on the fly from the palm of your hand.

Uncompromised Features – This board is loaded: 10 USB 3.0 Ports, SATA III/6G support, 5 PCI-E 3.0* ports, integrated Bluetooth, PCI-E/DIMM Disable jumpers, and a Right Angled 24pin power connector to assist with cable management.

*Pending PCI Express® 3.0 supported CPU / **Sold Separately

KEY SPECS

- Supports Intel® Core™ i7 Processor family for LGA-2011 socket
- Intel® X79 Chipset
- Enthusiast Layout Supporting 2-Way SLI®, 3-Way SLI®, 4-Way SLI® & CrossfireX™
- 4 DIMM Quad-Channel DDR3 2133MHz+ (Up To 32GB)
- PCI Express® 3.0 Ready*
- 5 PCI Express® Graphics Expansion Slots
- 1 PCI Express® x1 slots

- 10 USB 2.0 Ports (two rear panel, eight onboard)
- 10 USB 3.0 Ports (eight rear panel, two onboard)
- Supports Bluetooth
- 2 SATA III/6G Ports (2 E-SATA)
- 4 SATA II/3G Ports
- 1 1394b Port (Firewire, One onboard)
- 2 Gigabit Ethernet Ports (10/100/1000)
- 8 Channel High Definition Audio + Optical
- XL-ATX Form Factor

DESIGN DETAILS

Supported CPUs - Intel® Core™ i7 Socket 2011
Socket Type - LGA2011

PCH - Intel® X79

DIMM QTY - 4 DIMM Slots

Memory Type - DDR3 800/1066/1333/1600/1866/2133MHz+
Memory Capacity - 32GB

SATA II 3.0Gb/s Ports/Controller - 4 / X79 PCH

SATA III 6.0Gb/s Ports/Controller - 2 / X79 PCH

E-SATA 6.0Gb/s Ports/Controller - 2 / Marvell 9182

RAID Support - RAID 0, 1, 5, 10, JBOD

USB 2.0 Ports/Controller - 10 / Intel® X79 PCH

USB 3.0 Ports/Controller - 10 / VLI VL800-Q8

Network Speed - 10/100/1000

Network Ports/Controller - 2 / Marvell 88E8059

Audio - 8 Channel HD Audio

Audio Controller - Realtek ALC898

PCI-E Slot Arrangement - 1x16, 2x16, 3x8 or 4x8

PCI-E x16 Mechanical Slots - 5

PCI-E x1 Slots - 1

BIOS Type - AMI / UEFI

Software - EVGA E-LEET Tuning Utility

Fan Headers - 7

DIMENSIONS

- Width: 10.375in – 263.5mm
- Length: 13.5in – 345.4mm
- Form Factor: XL-ATX

ACCESSORIES

- EVGA Driver Installation Disc with EVGA E-LEET
- Rear Case I/O Panel
- 2 SATA 3G Data Cables
- 2 SATA 6G Data Cables
- 2 SATA Power Adapters
- 2 Port USB / 1394 Firewire Port Bracket
- 2 Port USB 3.0 Bracket
- 2-way SLI Bridge
- Visual Installation Guide
- Manual



PRODUCT WARRANTY

This product is covered under EVGA's 3 year warranty which covers parts and labor. Further warranty extension is available upon registration within 30 days of purchase. For more details please visit www.evga.com/warranty



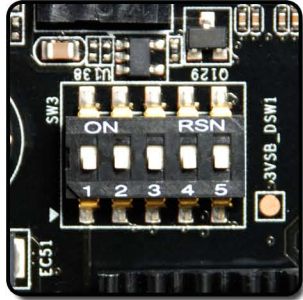
12 PHASE PWM

Cleanest variable power switching



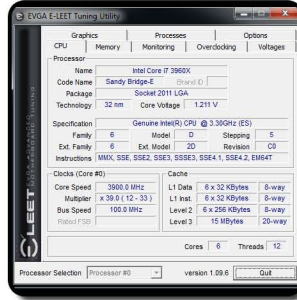
PCI-E DISABLE SWITCH

Quickly and easily troubleshoot!



E-LEET TUNING UTILITY

Adjust your overclocking in 0.5.



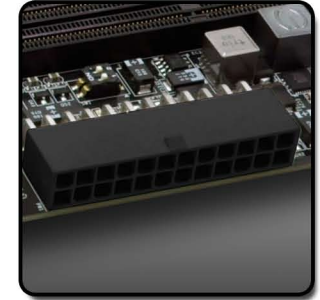
TRIPLE BIOS SUPPORT

Use 3 separate profiles!



RIGHT ANGLED 24 PIN

Improved cable management



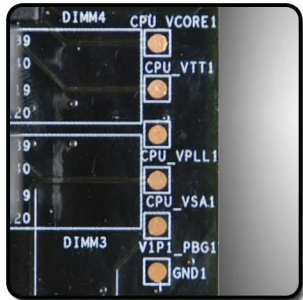
ONBOARD BLUETOOTH

Wireless input and data connection



EZ VOLTAGE READ POINTS

Easy read dedicated read points



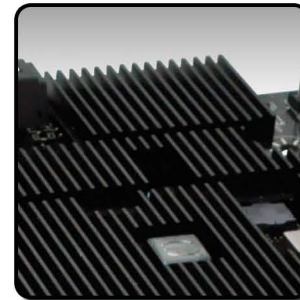
ONBOARD CPU TEMP MONITOR

Monitor CPU temps quickly & easily



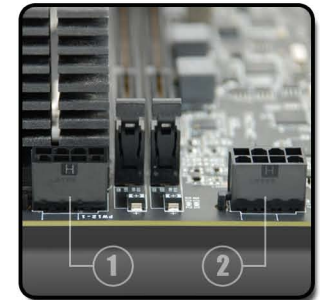
PASSIVE CHIPSET HEATSINK

No fans, lower noise, longer lifespan



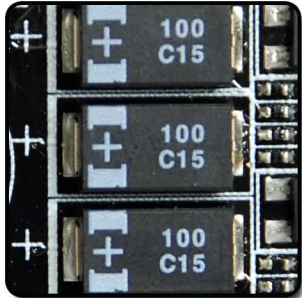
DUAL 8 PIN CPU POWER

Optional 8 pin provides up to 600w



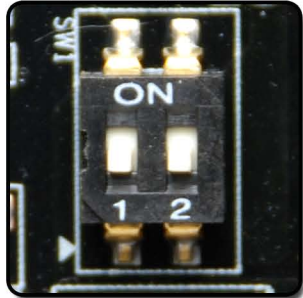
100% POSCAP CAPACITORS

Higher quality, longer lifespan



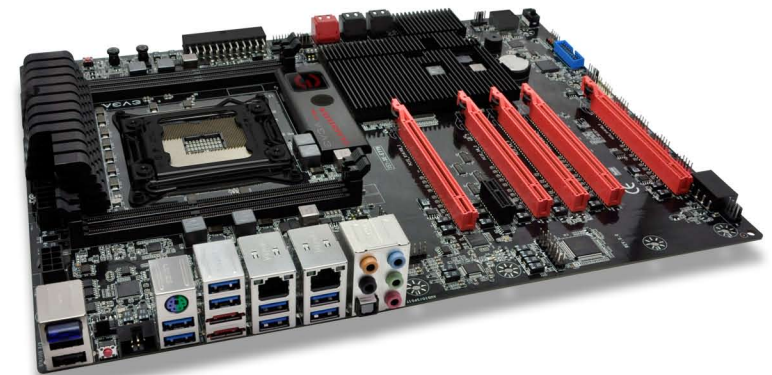
DIMM DISABLE SWITCH

Quickly and easily troubleshoot!



HIGHER GOLD CONTENT

Lower inductance, better power delivery!



PRODUCT WARRANTY

This product is covered under EVGA's 3 year warranty which covers parts and labor. Further warranty extension is available upon registration within 30 days of purchase. For more details please visit www.evga.com/warranty/

