



Welcome to a new class of high performance motherboards with the EVGA Z87 lineup. These platforms offer a return to greatness with a completely redesigned GUI BIOS interface, reimagined power VRM that focuses on efficiency, and loaded with features like up to NVIDIA SLI®, Intel Gigabit LAN, native SATA 6G/USB 3.0 and more.

Did we also mention that this motherboard is designed for the overclocker? Built from the ground up to give you all the essentials you need for overclocking, with a GUI BIOS that is focused on functionality, brand new software interface for overclocking in the O.S., ultra high quality components, and robust PCI-E 3.0 and memory trace layout.

With these features and more, it is clear that the EVGA Z87 motherboards are not engineered to just be the best, they are engineered to exceed the best.

KEY SPECS

- Supports Intel® Core™ i7/i5/i3 Processor family for LGA-1150 socket
- Intel® Z87 Chipset
- Enthusiast Layout Supporting 2-Way SLI® + PhysX®
- 4 DIMM Dual-Channel DDR3 2666Mhz+ (Up To 32GB)
- PCI Express® 3.0 Ready
- 1 HDMI Port
- 1 DisplayPort Port
- 6 USB 2.0 Ports (four rear panel, two onboard)
- 6 USB 3.0 Ports (four rear panel, two onboard)
- Supports Bluetooth V2.1
- 8 SATA III/6G Ports
- 2 E-SATA Ports
- 1 Intel Gigabit Ethernet Port (10/100/1000)
- 8 Channel HD Audio
- ATX Form Factor

DESIGN DETAILS

Supported CPUs - Intel® Core™ i7/i5/i3 Socket 1150
Socket Type - LGA1150
PCH - Intel® Z87

DIMM QTY - 4 DIMM Slots
Memory Type - DDR3 800/1066/1333/1600/2133/2400/2666MHz+
Memory Capacity - 32GB

SATA III 6.0Gb/s Ports/Controller - 6 / Z87 PCH - 2 / Marvell 9220
E-SATA 3.0Gb/s Ports/Controller - 2 / ASMedia ASM1061
RAID Support - RAID 0, 1, 5, 10, JBOD

USB 2.0 Ports/Controller - 6 / Intel® Z87 PCH
USB 3.0 Ports/Controller - 6 / Intel® Z87 PCH

Network Speed - 10/100/1000
Network Ports/Controller - 1 / Intel® i217

Audio - 8 Channel
Audio Controller - Realtek ALC898
PCI-E Slot Arrangement - 1x16, 2x8, 1x8+2x4, 1x8+4+4+1
PCI-E Mechanical Slots - 4
PCI-E x1 Slots - 1

BIOS Type - AMI / UEFI
Software - EVGA E-LEET X Tuning Utility

Fan Headers - 6

DIMENSIONS

- Width: 9.6in – 243.8mm
- Length: 12in – 304.8mm
- Form Factor: ATX

ACCESSORIES

- EVGA Driver Installation Disc
- Rear Case I/O Panel
- Rear Case I/O Cover
- 4 SATA 6G Data Cables
- 2-way SLI Bridge
- Visual Installation Guide
- Manual



PRODUCT WARRANTY

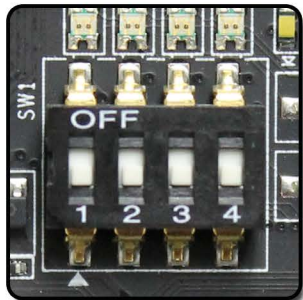
This product is covered under EVGA's 3 year warranty which covers parts and labor. Further warranty extension is available upon registration within 30 days of purchase. For more details please visit www.evga.com/warranty



BRAND NEW GUI BIOS INTERFACE
Focused on functionality



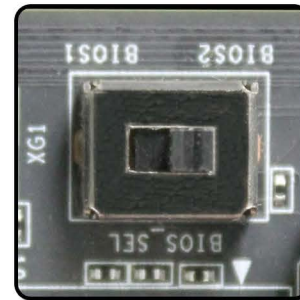
PCI-E DISABLE SWITCH
Quickly and easily troubleshoot!



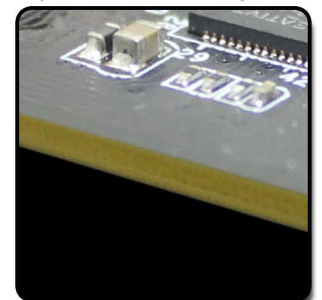
E-LEET X TUNING UTILITY
Adjust your overclocking in 0.5.



DUAL BIOS SUPPORT
Use 2 separate profiles!



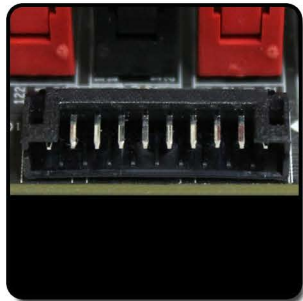
6 LAYER PCB
Improved overclock stability and PCB cooling



ONBOARD BLUETOOTH
Wireless input and data connection



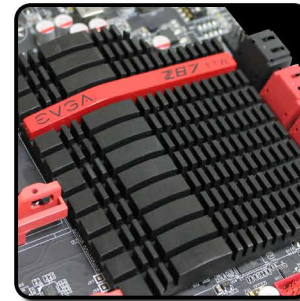
EZ VOLTAGE READ POINTS
Easy read dedicated read points



ONBOARD CPU TEMP MONITOR
Monitor CPU temps quickly & easily



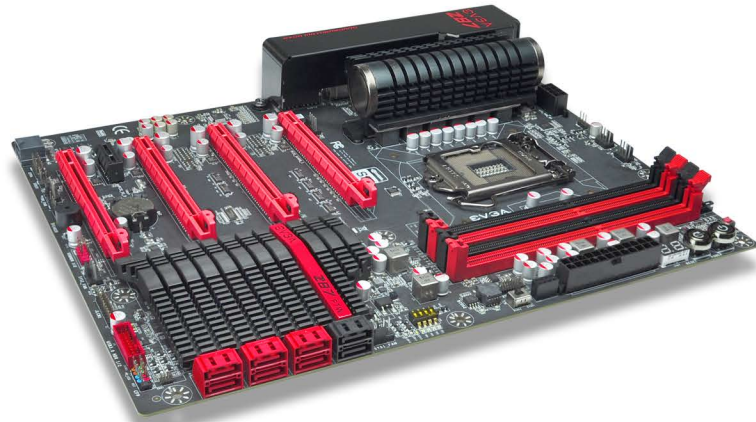
PASSIVE CHIPSET HEATSINK
No fans, lower noise, longer lifespan



6 PHASE PWM
Cleanest variable power switching



HIGHER GOLD CONTENT
Lower inductance, better power delivery!



PRODUCT WARRANTY

This product is covered under EVGA's 3 year warranty which covers parts and labor. Further warranty extension is available upon registration within 30 days of purchase. For more details please visit www.evga.com/warranty/

