



The EVGA Z270 CLASSIFIED K improves upon the dominant Z170 Classified K and adds the latest features for hardcore gamers and overclockers. Featuring the next-gen Intel® Z270 Express Chipset, this motherboard is built to crush the competition...and then some. The Z270 Classified K's storage options keeps your data blazing fast on the latest SSD standards, including M.2, U.2 and is Intel® Optane™ Memory Ready.

The Built-in Killer™ E2500 NIC prioritizes and reduces latency to keep you at the top of your game from the first match to the last. With the Creative Sound Core3D audio, even if you cannot see your opponents coming you'll certainly be able to hear them. Finally, no Classified board would be complete without a newly-designed VRM and hardware design built for cutting-edge performance and overclockability.

DESIGN DETAILS

Supported CPUs -

Intel® 7th Generation Socket 1151 Processors

Socket Type - LGA 1151

PCH - Intel® Z270

DIMM QTY - 4 Single Latch DIMM Slots

Memory Type - Dual Channel DDR4 Up to 3600MHz+

Memory Capacity - 64GB (4x16)

SATA 6.0Gb/s Ports/Controller -

4 / Intel® Z270 PCH - 4 / Marvell 9235

SATA Express - 2 / Intel® Z270 PCH (Shared with SATA)

RAID Support - RAID 0, 1, 5, and 10

USB 2.0 Ports/Controller -

2 (from internal header) / Intel® Z270 PCH

USB 3.0 Ports/Controller -

8 (4 from 2 internal headers) / Intel® Z270 PCH

USB 3.1 Ports/Controller -

2 (1 Type-A, 1 Type-C) / Intel® Z270 PCH

Network Speed - 10/100/1000

Network Ports/Controller -

2 / Killer™ E2500 NIC / Intel® i219 PHY

Audio - 6 Channel HD Audio

Audio Controller -

Creative Core3D Quad-Core Audio Processor + Optical

PCI-E Slot Arrangement - 1x16 and 1x1, 2x8 and 1x1

PCI-E x16 Mechanical Slots - 3

PCI-E x1 Slots - 3

M.2 / 2x Key-M 80mm/110mm (Up to 32Gbps)

M.2 / 1x Key-E

BIOS Type - Full UEFI with mouse/keyboard control

Software - EVGA E-LEET X Tuning Utility

Fan Headers - 7 4-Pin (3 PWM, 4 DC/PWM)

KEY SPECS

- Supports Intel® Core™ 7th Generation Processor Family for LGA 1151 socket
- 300% Increased Gold Content
- Intel® Z270 Chipset
- Enthusiast Layout Supporting 2-Way SLI® + PhysX®
- 4 DIMM Dual-Channel DDR4 3600MHz+ (Up To 64GB)
- PCI Express® 3.0 Ready
- 2 USB 2.0 Ports (from single internal header)
- 8 USB 3.0 Ports (4 rear panel, 4 from 2 internal headers)
- 2 USB 3.1 Ports (Type-A/Type-C)
- Intel® Optane Support
- 1 HDMI 1.4 Port
- 1 DisplayPort 1.2 Port
- 8 SATA (2 SATA Express)
- 2 M.2 Key-M 80mm/110mm up to 32Gbps
- 1 M.2 Key-E 32mm
- 1 U.2 Port
- 1x Killer™ E2500 NIC
- EATX Form Factor

DIMENSIONS

- Width: 10.375in – 263.5mm
- Length: 12in – 304.8mm
- Form Factor: E-ATX

ACCESSORIES

- EVGA Driver Installation Disc with EVGA E-LEET
- Rear Case I/O Panel
- Rear Case I/O Cover
- 2 SATA 6G Data Cables
- 2-way SLI Bridge
- Enthusiast Stickers
- Case Badge
- Manual



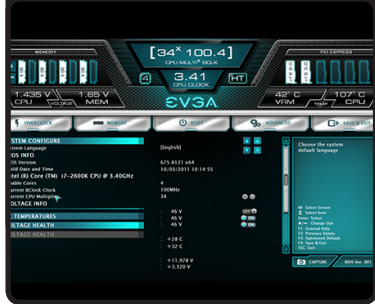
PRODUCT WARRANTY

This product is covered under EVGA's 3 year warranty which covers parts and labor. Further warranty extension is available upon registration within 30 days of purchase. For more details please visit: www.evga.com/warranty.



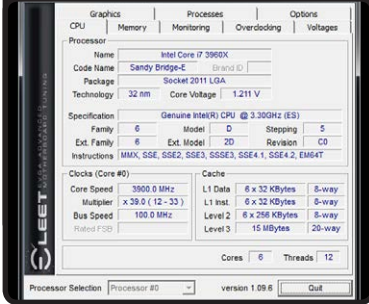
FULL UEFI GUI BIOS INTERFACE

Focused on functionality



E-LEET TUNING UTILITY

Adjust your overclocking in OS



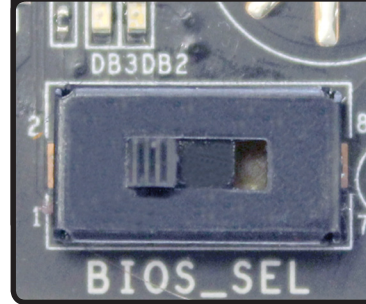
INCLUDES U.2 SUPPORT

Next Gen Interface



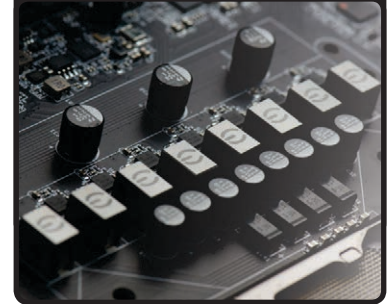
TRIPLE BIOS SUPPORT

Use 3 separate profiles!



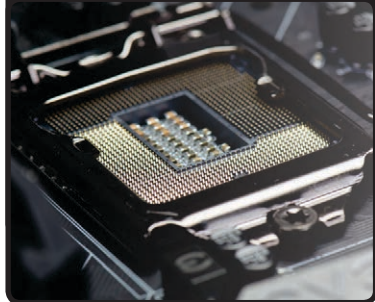
13 PHASE PWM

Cleanest variable power switching



HIGHER GOLD CONTENT

Lower inductance, better power delivery!



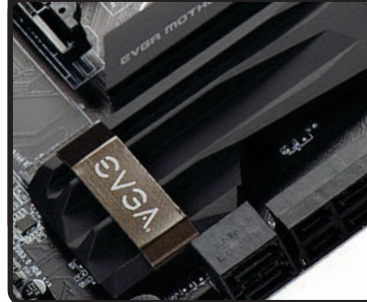
ONBOARD CPU TEMP MONITOR

Monitor CPU temps quickly and easily



PASSIVE CHIPSET HEATSINK

No fans, lower noise, longer lifespan



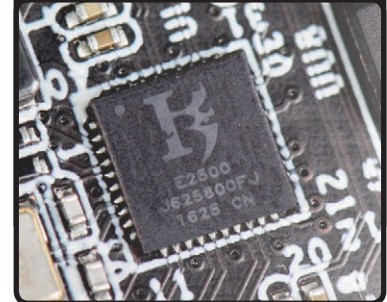
6 LAYER PCB

Improved overclock stability and PCB cooling



KILLER E2500 NIC

Helps to prioritize & reduce network latency



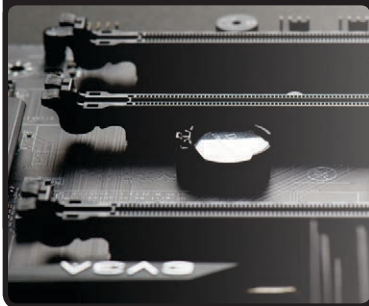
ONBOARD POWER / RESET

CMOS Reset Buttons at your fingertips.



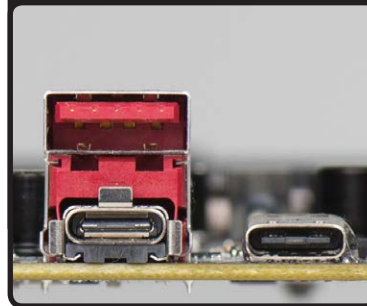
2-Way SLI + PhysX

Able to handle the most demanding videos.



USB 3.1

Connect the latest peripherals and devices.



PRODUCT WARRANTY

This product is covered under EVGA's 3 year warranty which covers parts and labor. Further warranty extension is available upon registration within 30 days of purchase. For more details please visit: www.evga.com/warranty.

