



The EVGA Z75 SLI® is here. Featuring native USB 3.0 and SATA 6G, 2-Way SLI® on PCI-E 3.0\*, Gigabit NIC and a Mini DisplayPort connector are all included on the board.

EVGA knows that power is critical for a performance board. No compromises were made here. With 7+1 power Phases, POSCAP and Solid State Capacitors deliver clean, stable power to your CPU.

For storage, the EVGA Z75 SLI® has you covered. Native USB 3.0 support delivers super speed performance for next generation storage devices, and native SATA 6G enables maximum performance on the latest SolidState and Mechanical storage drives.

\*Requires PCI Express® 3.0 supported CPU

## KEY SPECS

- Supports Intel® Core™ i5 and i7 Socket 1155 Processors
- Intel® Z75 Chipset
- Enthusiast Layout Supporting 2-way plus PhysX® or CrossFireX™
- 4 DIMM Dual-Channel DDR3 2133Mhz+ (up to 32GB)
- 2 PCI Express 3.0 Graphics Expansion Slots
- 10 USB 2.0 Ports (six rear panel, four onboard)
- Onboard Mini-DisplayPort
- 4 USB 3.0 Ports (two rear panel + two onboard)
- 4 SATA III/6G Ports
- 6 SATA II/3G Ports (2 E-SATA)
- 1 Gigabit Ethernet Ports (10/100/1000)
- 8 Channel High Definition Audio
- ATX Form Factor

## DESIGN DETAILS

**Supported CPUs** - Intel® Core™ i5 and Core™ i7 Socket 1155  
**Socket Type** - LGA1155

**PCH** - Intel® Z75

**DIMM QTY** - 4 DIMM Slots

**Memory Type** - DDR3 800/1066/1333/1600/1866/2133MHz+  
**Memory Capacity** - 32GB

**SATA II 3.0Gb/s Ports/Controller** - 4 / Z75 PCH

**SATA III 6.0Gb/s Ports/Controller** - 2 / Z75 PCH - 2 / Marvell 9172

**E-SATA** - 2 / Marvell 88SE6121

**RAID Support** - RAID 0, 1, 5, 10, JBOD

**USB 2.0 Ports/Controller** - 10 / Intel® Z75 PCH

**USB 3.0 Ports/Controller** - 4 / Intel® Z75 PCH

**Network Speed** - 10/100/1000

**Network Ports/Controller** - 1 / Marvell 88E8057

**Audio** - 8 Channel HD Audio

**Audio Controller** - Realtek ALC889

**PCI-E Slot Arrangement** - 1x16 or 2x8 + 1x4

**PCI-E x16 Mechanical Slots** - 3

**PCI-E x1 Slot** - 1

**BIOS Type** - AMI / UEFI

**Software** - EVGA E-LEET Tuning Utility

**Fan Headers** - 7

## DIMENSIONS

- Width: 9.6in – 243.8mm
- Length: 12in – 304.8mm
- Form Factor: ATX

## ACCESSORIES

- EVGA Driver Installation Disc with EVGA E-LEET
- Rear Case I/O Panel
- 2 SATA 3G Data Cables
- 2 SATA 6G Data Cables
- 2 SATA Power Adapters
- Visual Installation Guide
- Manual



## PRODUCT WARRANTY

This product is covered under EVGA's 3 year warranty which covers parts and labor. Further warranty extension is available upon registration within 30 days of purchase. For more details please visit [www.evga.com/warranty](http://www.evga.com/warranty)





## 7+1 PHASE PWM

Cleanest variable power switching



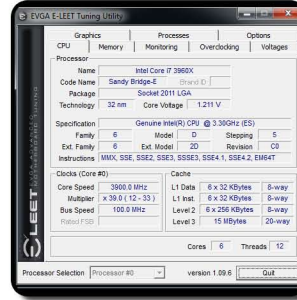
## POWER, RESET AND CLEAR CMOS

Power, reset system or BIOS settings with ease



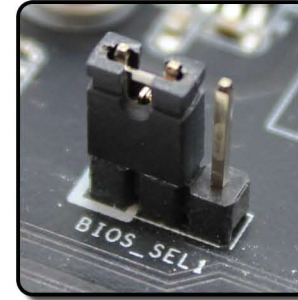
## E-LEET TUNING UTILITY

Adjust your overclocking in 0.S.



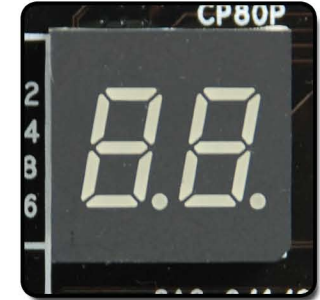
## DUAL BIOS SUPPORT

Use 2 separate profiles!



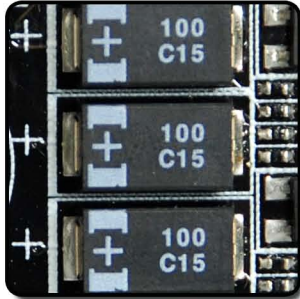
## ONBOARD CPU TEMP MONITOR

Monitor CPU temps quickly & easily



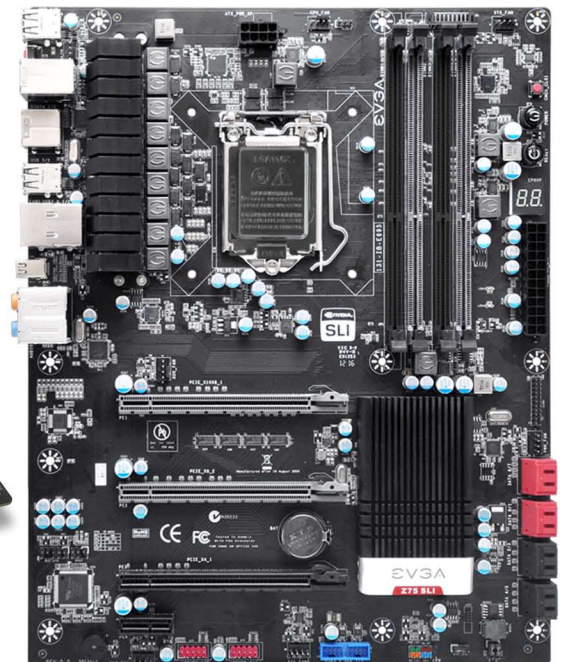
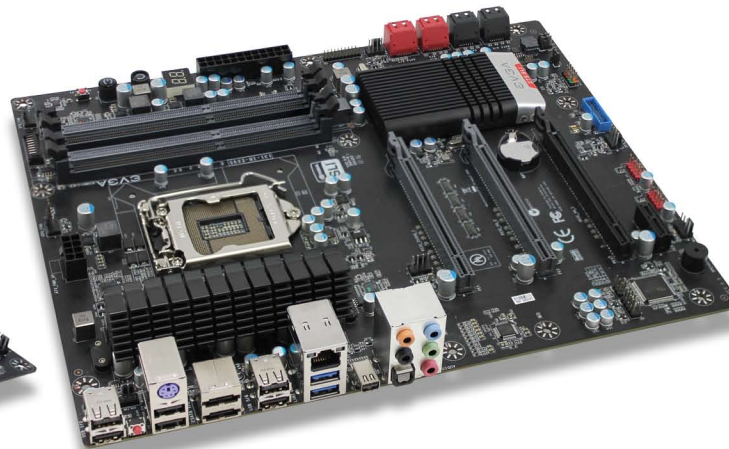
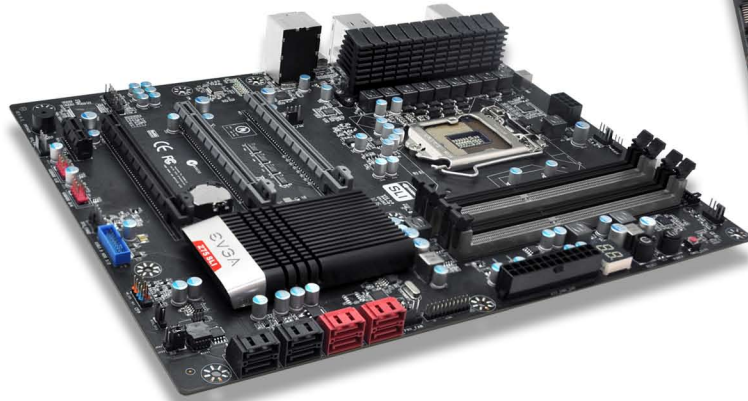
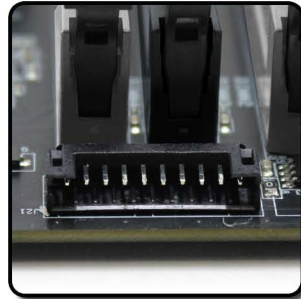
## POSCAP CAPACITORS

Higher quality, longer lifespan



## EZ VOLTAGE READ POINTS

Easy read dedicated read points



## PRODUCT WARRANTY

This product is covered under EVGA's 3 year warranty which covers parts and labor. Further warranty extension is available upon registration within 30 days of purchase. For more details please visit [www.evga.com/warranty](http://www.evga.com/warranty)

