



The EVGA X99 Micro was engineered to pack a punch. A highly efficient 6-phase Digital VRM providing the cleanest power to the CPU possible. A total of 4 DIMM slots support up to 64GB of DDR4 memory, and a 4 layer memory design allows for extreme memory speeds such as 3000MHz+ (OC)**. The PCI-E layout is optimized for improved lane distribution and better performance, and with native support for NVIDIA 3-Way SLI®, this is the ultimate platform for the performance user.

A great amount of detail was also paid attention to the onboard devices, including a total of 6 native SATA 6.0Gb/s ports, Intel Gigabit Network, native USB 3.0 support, and 8 Channel HD Audio with Optical.

Of course, no great motherboard can truly flex its muscles without a great BIOS. The EVGA X99 Micro uses EVGA's new GUI BIOS that focuses on the best overclocking support and functionality. Straight and to the point, the way a modern BIOS should be.

KEY SPECS

- Supports Intel® Core™ i7 Processor family for LGA-2011-3 socket
- Intel® X99 Chipset
- Enthusiast Layout Supporting 2-Way SLI®, 3-Way SLI® & CrossfireX™
- 4 DIMM Quad-Channel DDR4 3200MHz+** (Up To 64GB)
- PCI Express® 3.0 Ready
- 3 PCI Express® Graphics Expansion Slots
- 8 USB 2.0 Ports (six rear panel, two onboard)
- 6 USB 3.0 Ports (four rear panel, two onboard)
- 6 SATA III/6G RAID Ports
- 1 Intel Gigabit Ethernet Port (10/100/1000)
- 8 Channel High Definition Audio + Optical
- M.2 Slot E
- M-ATX Form Factor

DESIGN DETAILS

Supported CPUs - Intel® Core™ i7 Socket 2011-3
Socket Type - LGA2011-3

PCH - Intel® X99

DIMM QTY - 4 DIMM Slots
Memory Type - DDR4 Up to 3200MHz+**
Memory Capacity - 64GB

SATA III 6.0Gb/s Ports/Controller - 6 / X99 PCH RAID
RAID Support - RAID 0, 1, 5, 10, JBOD

USB 2.0 Ports/Controller - 8 / Intel® X99 PCH
USB 3.0 Ports/Controller - 6 / Intel® X99 PCH

*PCI-E lane distribution listed REQUIRES a 40 lane CPU.

Network Speed - 10/100/1000
Network Ports/Controller - 1 Intel® i217

Audio - 8 Channel HD Audio
Audio Controller - Realtek (ALC1150)

PCI-E Slot Arrangement - 1x16, 2x16, or 3x8*
PCI-E x16 Mechanical Slots - 3

BIOS Type - AMI / UEFI
Software - EVGA E-LEET Tuning Utility

Fan Headers - 5

**2800MHz and 3000MHz modules are officially supported in latest BIOS update.

DIMENSIONS

- Width: 9.6in – 244mm
- Length: 9.6in – 244mm
- Form Factor: M-ATX

ACCESSORIES

- EVGA Driver Installation Disc with EVGA E-LEET
- Rear Case I/O Panel
- Rear Case I/O Cover
- 1 Probelt Cable
- 4 SATA 6G Data Cables
- 2-way SLI Bridge
- Manual



PRODUCT WARRANTY

This product is covered under EVGA's 3 year warranty which covers parts and labor. Further warranty extension is available upon registration within 30 days of purchase. For more details please visit www.evga.com/warranty



BRAND NEW GUI BIOS INTERFACE

Focused on functionality



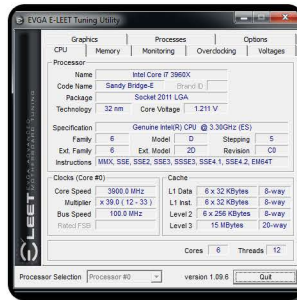
PASSIVE CHIPSET HEATSINK

No fans, lower noise, longer lifespan



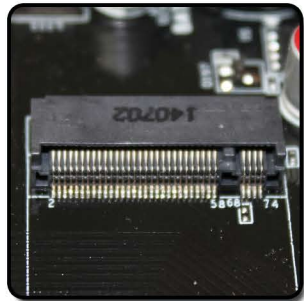
E-LEET TUNING UTILITY

Adjust your overclocking in 0.5.



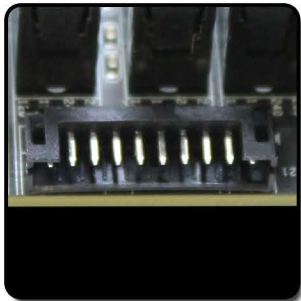
INCLUDES M.2 SUPPORT

The newest peripheral standard



EZ VOLTAGE READ POINTS

Easy read dedicated read points



ONBOARD CPU TEMP MONITOR

Monitor CPU temps quickly & easily



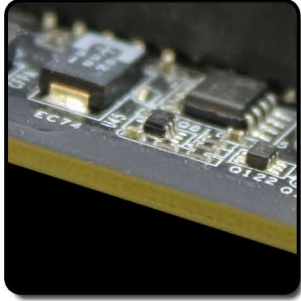
6 PHASE PWM

Cleanest variable power switching



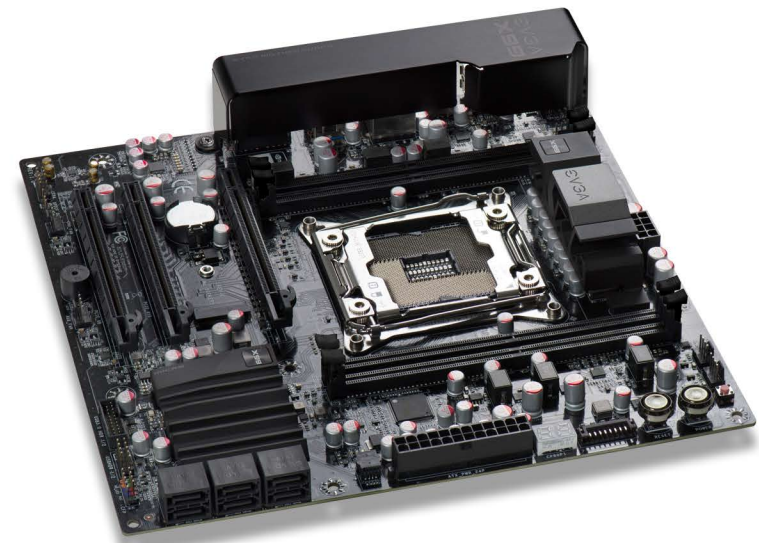
8 LAYER PCB

Improved overclock stability and PCB cooling



HIGHER GOLD CONTENT

Lower inductance, better power delivery!



PRODUCT WARRANTY

This product is covered under EVGA's 3 year warranty which covers parts and labor. Further warranty extension is available upon registration within 30 days of purchase. For more details please visit www.evga.com/warranty

