



The EVGA X99 Micro2 takes all the great features from the EVGA X99 Micro motherboard, and upgrades it with USB 3.1 Type-C, increased SATA ports, improved layout design + BIOS and refreshed look. The EVGA X99 Micro2 offers a stunning set of features and overclocking support, along with EVGA's new GUI BIOS that focuses on the best overclocking support, functionality, and usability.

Get your PC future proof ready with the EVGA X99 Micro2 motherboard. This motherboard features the next generation USB 3.1 Type-C connector that delivers transfer speeds of up to 10Gb/s for unbelievable performance.

KEY SPECS

- Supports Intel® Core™ i7 Processor family for LGA-2011-3 socket
- Intel® X99 Chipset
- Enthusiast Layout Supporting 2-Way SLI®, 3-Way SLI® & CrossfireX™
- 4 DIMM Quad-Channel DDR4 3200MHz+ (Up To 64GB)
- PCI Express® 3.0 Ready
- 3 PCI Express® Graphics Expansion Slots
- 1 USB 3.1 Type-C
- 6 USB 2.0 Ports (four rear panel, two onboard)
- 6 USB 3.0 Ports (four rear panel, two onboard)
- 10 SATA III/6G Ports
- 1 Intel Gigabit Ethernet Port (10/100/1000)
- 8 Channel High Definition Audio + Optical
- M.2 Slot M 32Gb/s
- M-ATX Form Factor

DESIGN DETAILS

Supported CPUs - Intel® Core™ i7 Socket 2011-3
Socket Type - LGA2011-3

PCH - Intel® X99

DIMM QTY - 4 DIMM Slots
Memory Type - DDR4 Up to 3200MHz+
Memory Capacity - 64GB

SATA III 6.0Gb/s Ports/Controller - 10 / X99 PCH RAID
RAID Support - RAID 0, 1, 5, 10, JBOD

USB 2.0 Ports/Controller - 6 / Intel® X99 PCH
USB 3.0 Ports/Controller - 6 / Intel® X99 PCH
USB 3.1 Ports/Controller - 1 / ASMedia ASM1142

Network Speed - 10/100/1000
Network Ports/Controller - 1 Intel® i217

Audio - 8 Channel HD Audio
Audio Controller - Realtek (ALC1150)

PCI-E Slot Arrangement - 1x16, 2x16, 2x16 and 1x8*
PCI-E x16 Mechanical Slots - 3

BIOS Type - AMI / UEFI
Software - EVGA E-LEET Tuning Utility

Fan Headers - 5

*PCI-E lane distribution listed REQUIRES a 40 lane CPU.

DIMENSIONS

- Width: 9.6in – 244mm
- Length: 9.6in – 244mm
- Form Factor: M-ATX

ACCESSORIES

- EVGA Driver Installation Disc with EVGA E-LEET
- Rear Case I/O Panel
- Rear Case I/O Cover
- 2 SATA 6G Data Cables
- Manual



PRODUCT WARRANTY

This product is covered under EVGA's 3 year warranty which covers parts and labor. Further warranty extension is available upon registration within 30 days of purchase. For more details please visit www.evga.com/warranty



BRAND NEW GUI BIOS INTERFACE

Focused on functionality



10 NATIVE SATA 6.0Gb/s PORTS

Improved performance and expandability



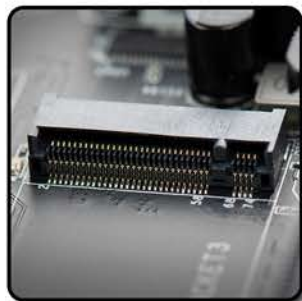
E-LEET TUNING UTILITY

Adjust your overclocking in OS.



M.2 TYPE M SUPPORT

Supports up to 32Gb/s



USB 3.1 TYPE-C

Next gen interface allows up to 10Gb/s of performance



ONBOARD CPU TEMP MONITOR

Monitor CPU temps quickly & easily



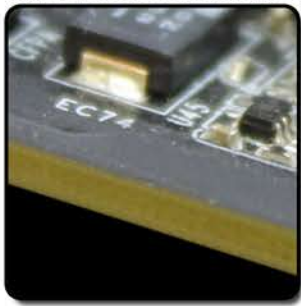
AUDIO ISOLATION

Allows for superior sound



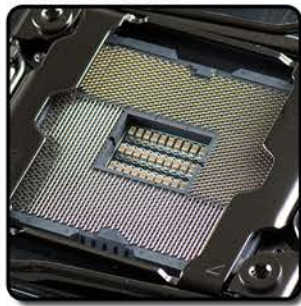
8 LAYER PCB

Improved overclock stability and PCB cooling



BLACK NICKEL CPU ILM

Premium materials



PRODUCT WARRANTY

This product is covered under EVGA's 3 year warranty which covers parts and labor. Further warranty extension is available upon registration within 30 days of purchase. For more details please visit www.evga.com/warranty

