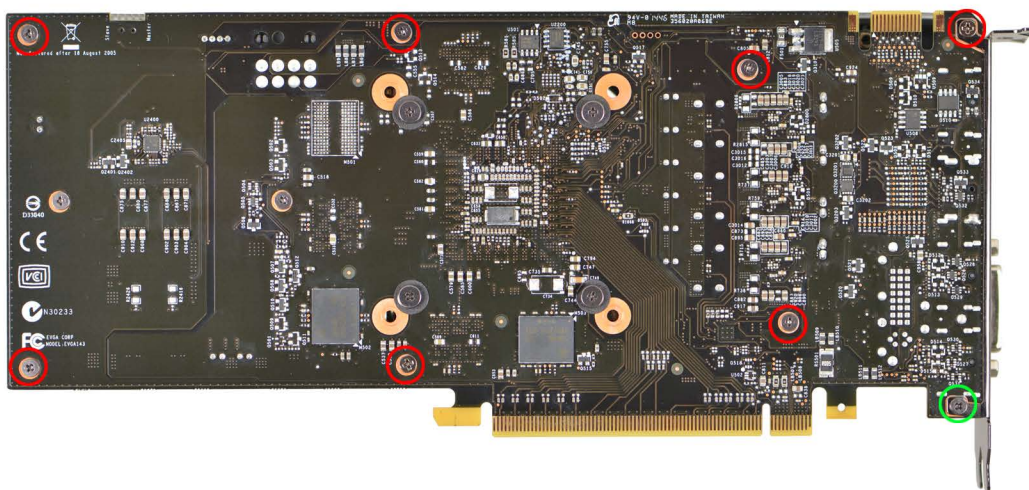


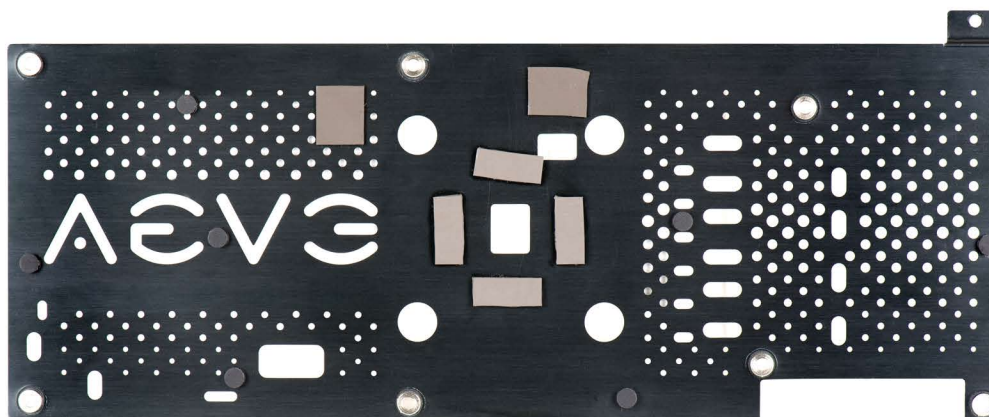
## Step 1

Remove all 8 screws indicated below. Remember to keep all accessories in case your card needs to be returned to EVGA.



## Step 2

Remove the protective cover from the backplate. Place on back of card and align the screw holes.



## Step 3

Use the 8 provided screws (not the ones you removed) to install the backplate to the PCB. Once the backplate is firmly attached to the card you are now ready to install your GTX 960 graphics card. 1 of the 8 screws is in a separate bag with a nut, this needs to be installed at the lower hole circled below in Green.

