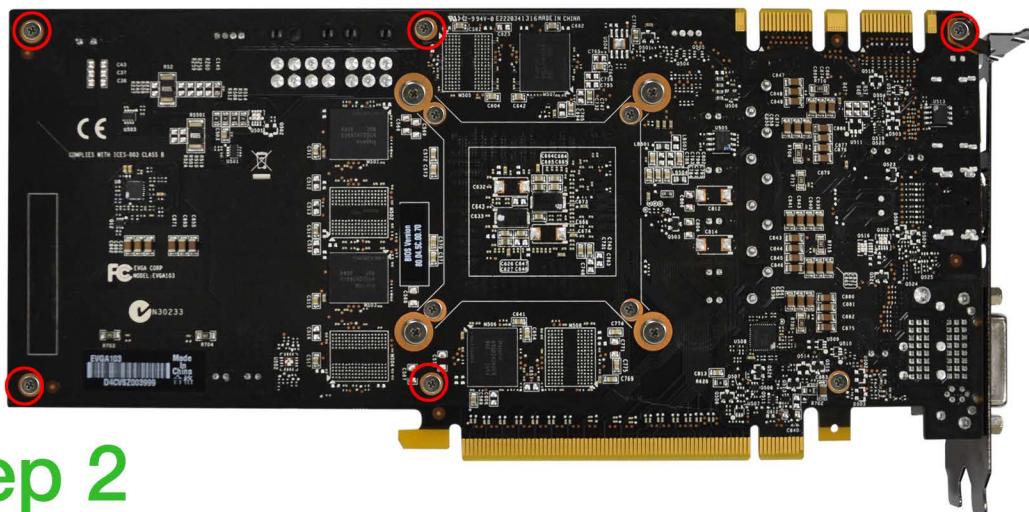


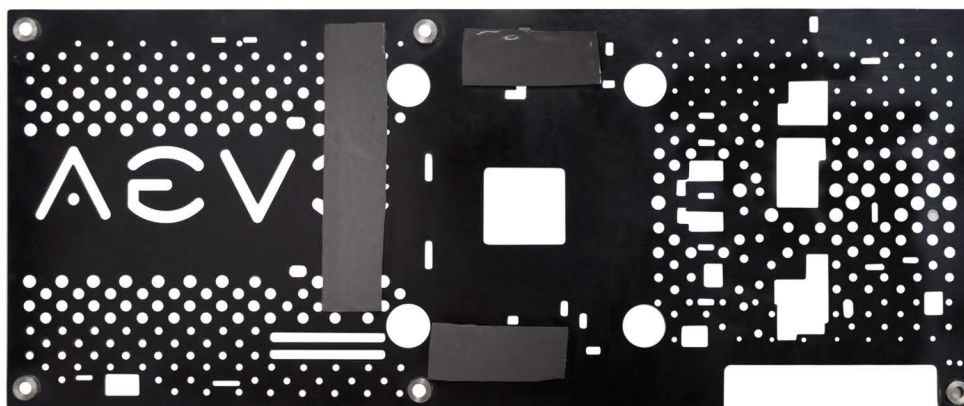
## Step 1

Remove all 5 screws indicated below. Remember to keep all accessories in case your card needs to be returned to EVGA.



## Step 2

Remove the protective cover from the backplate. Place on back of card and align the screw holes.



## Step 3

Use the 5 provided screws (not the ones you removed) to install the backplate to the PCB. Once the backplate is firmly attached to the card you are now ready to install your GTX 760 graphics card. The 7.2mm screw is used for the bracket. Optional: For dual fan GTX 760's please use the included nut to secure the screw.

