



The EVGA Z170 Classified K is engineered from the ground up for the hardcore gamer. Featuring a next generation Intel Z170 Express Chipset with DDR4 3600MHz+ memory support, this motherboard is built to dominate. Built in Killer™ Ethernet helps to prioritize and reduce network latency to keep you at the top of your game. Of course, with EVGA overclocking DNA, this board is built for overclocking with a robust VRM and hardware design that is built for speed.

KEY SPECS

- Supports Intel® Core™ 6th Generation Processor Family for LGA Socket 1151
- 300% Increased Gold Content
- Intel® Z170 Chipset
- Enthusiast Layout Supporting 2-Way SLI® + PhysX®
- 4 DIMM Dual-Channel DDR4 3600MHz+ (64GB)
- PCI Express® 3.0 Ready
- 2 USB 2.0 ports (two rear panel)
- 6 USB 3.0 Ports (six rear panel, two onboard)
- 2 USB 3.1 Ports
- 1 HDMI Port
- 1 DisplayPort 1.2 Port
- 8 SATA 6G Ports (2 SATA Express)
- 3 M.2 (Key M/E) Up to 32Gbps (M)
- 1 Intel® i219 Gigabit Ethernet Port (10/100/1000)
- 1 Killer™ E2400 NIC
- ATX Form Factor

DESIGN DETAILS

Supported CPUs - Intel® 6th Generation Socket 1151 Processors
Socket Type - LGA 1151
PCH - Intel® Z170

DIMM QTY - 4 DIMM Slots
Memory Type - DDR4 Up to 3600MHz+
Memory Capacity - 64GB

SATA 6Gb/s Ports/Controller - 6 / Intel® Z170 PCH – 2 / Marvell 9220
SATA Express - 2 / Intel® Z170 PCH (Shared with SATA)
RAID Support - RAID 0, 1, 5 and 10

USB 2.0 Ports/Controller - 2 / Intel® Z170 PCH
USB 3.0 Ports/Controller - 8 / Intel® Z170 PCH
USB 3.1 Ports/Controller - 2 / ASMedia ASM1142

Network Speed - 10/100/1000
Network Ports/Controller - 2 / Killer™ E2400 NIC/Intel® i219 Gigabit Ethernet PHY

Audio - 8 Channel HD
Audio Controller - Realtek ALC1150 + Optical

PCI-E Slot Arrangement - 1x16, 2x8, 1x4, 2x1
PCI-E x16 Mechanical Slots - 4
PCI-E x4 Mechanical Slots - 1
PCI-E x1 Mechanical Slots - 1
M.2 / 2x Key M (Up to 32Gbps)
M.2 / 1x Key E

BIOS Type - Full UEFI with mouse/keyboard control
Software - EVGA E-LEET X Tuning Utility

Fan Headers - 5 / 4-Pin PWM

DIMENSIONS

- Width: 9.6in – 243.8mm
- Length: 12in – 304.8mm
- Form Factor: ATX

ACCESSORIES

- EVGA Driver Installation Disc
- Rear Case I/O Panel
- Rear Case I/O Cover
- 2 SATA 6G Data Cables
- 2-way SLI Bridge
- Manual



PRODUCT WARRANTY

This product is covered under EVGA's 3 year warranty which covers parts and labor. Further warranty extension is available upon registration within 30 days of purchase. For more details please visit www.evga.com/warranty



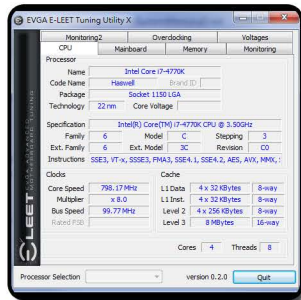
FULL UEFI GUI BIOS INTERFACE

Focused on functionality



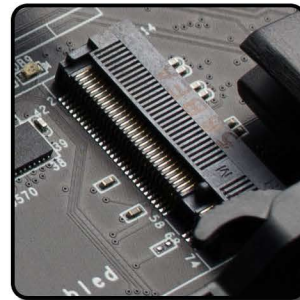
E-LEET X TUNING UTILITY

Adjust your overclocking in 0.S.



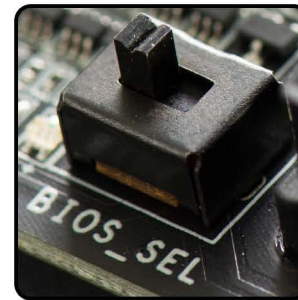
M.2 SLOT

Next generation form factor



DUAL BIOS SUPPORT

Use 2 separate profiles!



8 PHASE PWM

Cleanest variable power switching



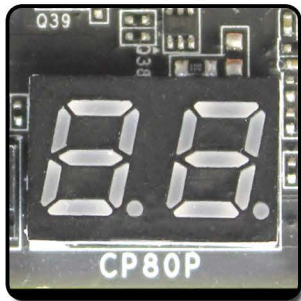
HIGHER GOLD CONTENT

Lower inductance, better power delivery!



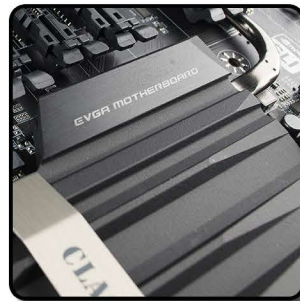
ONBOARD CPU TEMP MONITOR

Monitor CPU temps quickly & easily



PASSIVE CHIPSET HEATSINK

No fans, lower noise, longer lifespan



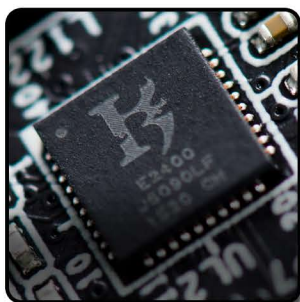
6 LAYER PCB

Improved overclock stability and PCB cooling



KILLER E2400 NIC

Helps to prioritize and reduce network latency.



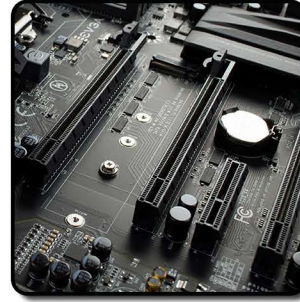
ONBOARD POWER

Reset and CMOS Reset Buttons – Power at your fingertips



2-WAY SLI + PHYX

Engineered to handle the most demanding video loads.



PRODUCT WARRANTY

This product is covered under EVGA's 3 year warranty which covers parts and labor. Further warranty extension is available upon registration within 30 days of purchase. For more details please visit www.evga.com/warranty

