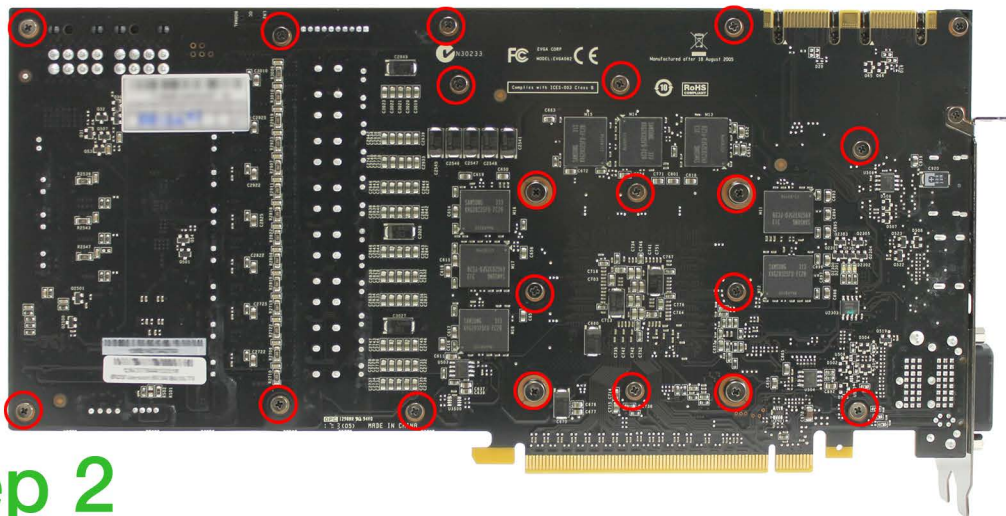


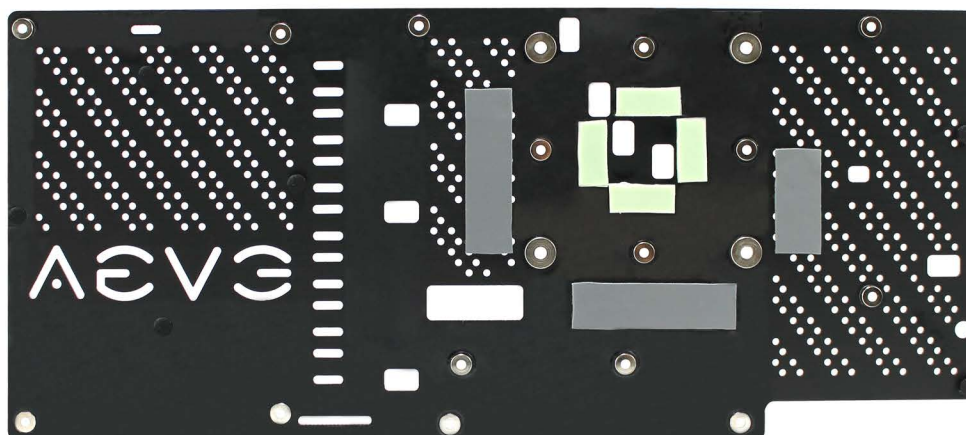
Step 1

Remove all 19 screws indicated below. Remember to keep all accessories in case your card needs to be returned to EVGA.



Step 2

Remove the protective cover from the backplate. Place on back of card and align the screw holes.



Step 3

Use the 19 provided screws (not the ones you removed) to install the backplate to the PCB. The screws circled in orange must be installed first. Once the backplate is firmly attached to the card you are now ready to install your GTX 770 Classified graphics card.

