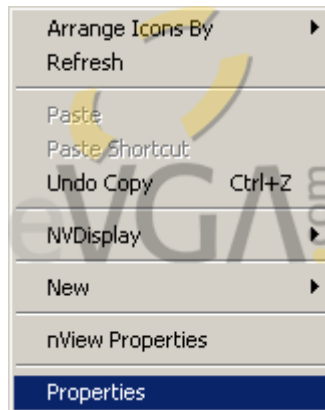


Change Refresh Rate in Windows XP

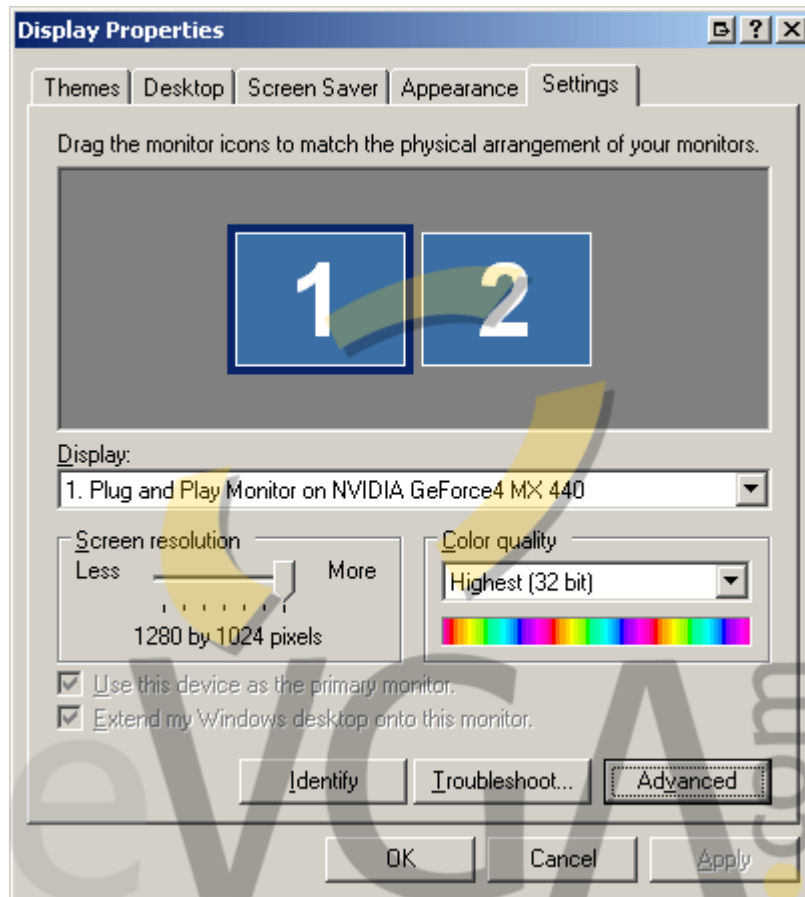
Advantages of changing the refresh rate for many people include alleviating eyestrain after long periods of time in front of a computer screen or removing pesky lines that roll across the screen. Adjustments to this display property can be made quickly and easily.

Note: the NVIDIA reference driver used in this Install guide is **version 56.72**

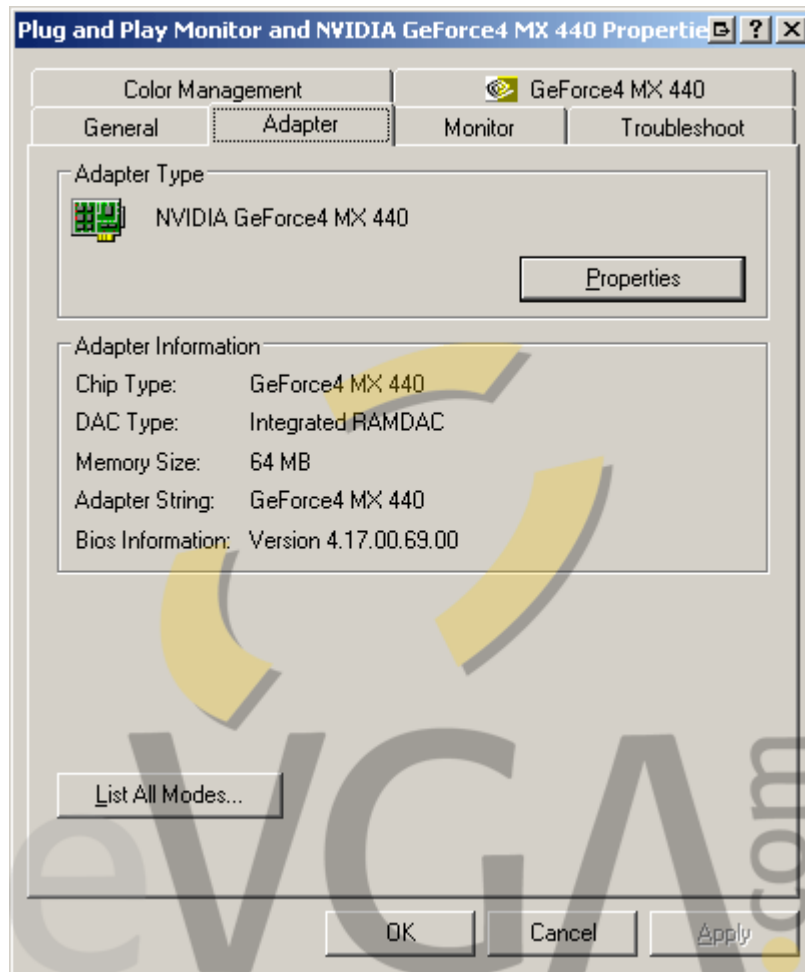
Step 1: Enter the **Display Properties** window by right-clicking the Windows Desktop and selecting **Properties**.



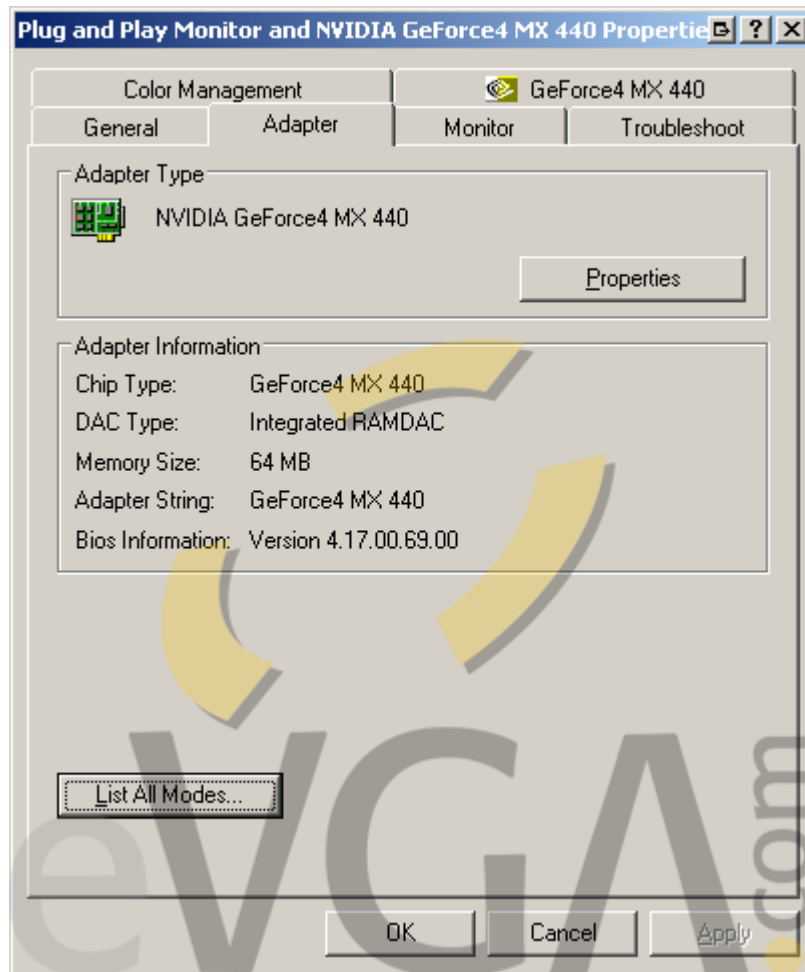
Step 2: Once you arrive at the **Display Properties** window, select the **Settings** tab in the upper right hand corner then click the **Advanced...** button in the lower right.



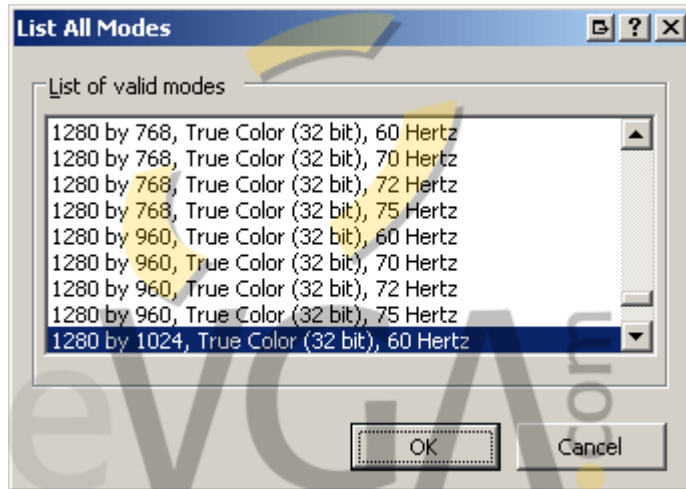
Step 3: You will arrive at the properties window for your video card. Select the **Adapter** Tab.



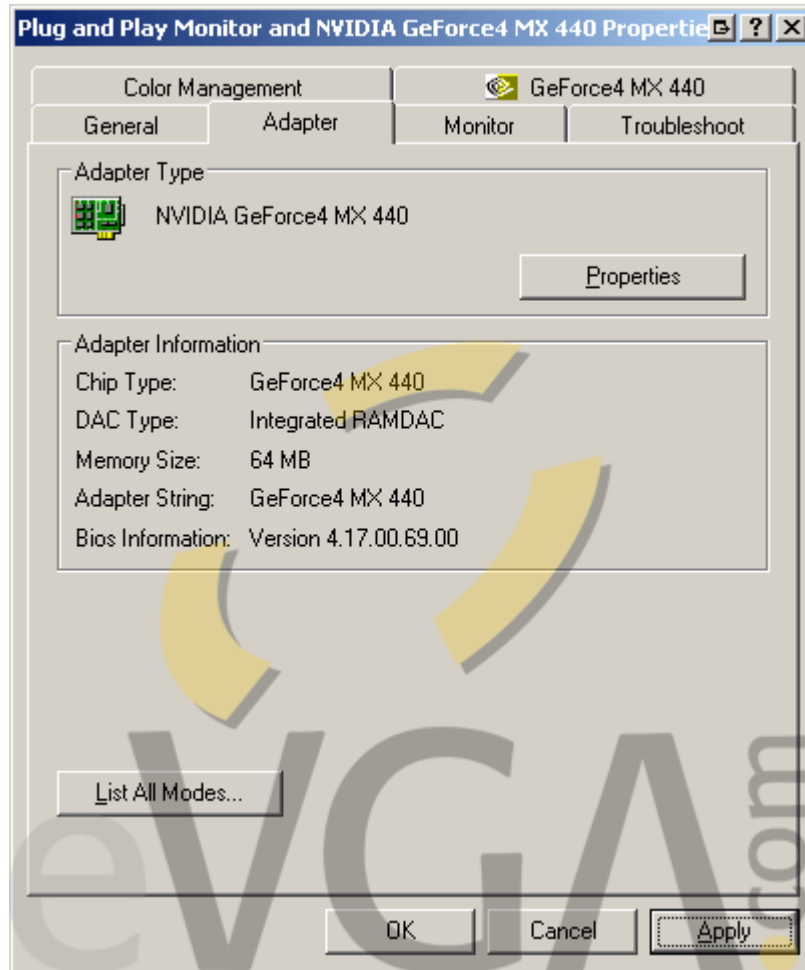
Step 4: Information about your video card will be indicated in the middle section. Click the button that is labeled **List All Modes...**



Step 5: A window will appear that will indicate compatible modes that is supported by both the video card and the monitor. The description follows the format of Resolution, Color Depth, and Refresh Rate measured in hertz (Hz). Select the refresh rate of your choice and click the **OK** button.



Step 6: Simply click on the **APPLY** button to set the Refresh Rate setting for your monitor.



Step 7: The screen may flicker a couple of times, resulting in the refresh rate of your choice. Another pop-up window asks if you would like to keep the current settings. If the screen goes black with no video, the refresh rate you have selected may not be supported. You have up to 15 seconds to keep the settings or revert to your previous configuration. If you are satisfied with the new refresh rate select **Yes** followed by the **OK** button.

